

## Cho Oyu expeditions Fly Lhasa - Exit Zangmu

Mt. Qowowuyag ( Cho Oyu ) rising 8,201 m above sea level is situated in the middle section of the Himalayas, with the north side lying in the Tingri County. Cho Oyu, the sixth highest mountain in the world, has only recently become a popular mountain to climb.

It is known to be one of the easier of the world's fourteen 8.000 meter mountain. This is because the ascent to the summit is short and direct, with a few small technical sections climbed in safety using fixed ropes. Additionally, the mountain can be easily reached by four-wheel-drive vehicle.



### Key Information:

Expedition Duration: 42 day(s)  
Group Size: 2 - 10 people

### Location

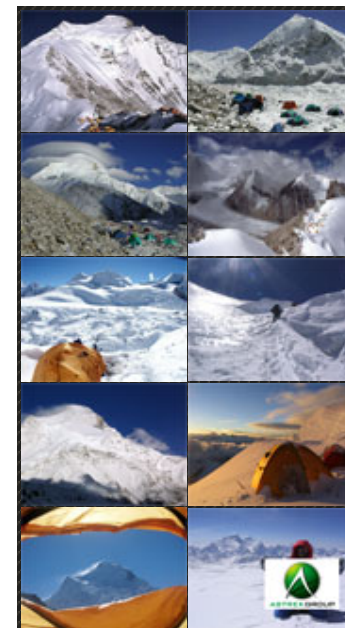
28°06'N  
86°39'E  
Mahalangur Himal (Nepal-China)

### First Ascent

Cho Oyu was first climbed on October 19, 1954 via the northwest ridge by Herbert Tichy, Joseph Jöchler and Sherpa Pasang Dawa Lama of an Austrian expedition.

### Support Treks

Spring	Autumn		Full Board Expedition - Service up to Summit
Apr 8	Aug 26	1	Arrival Kathmandu. Transfer to hotel.
Apr 9	Aug 27	2	Kathmandu. Briefing and shopping.
Apr 10	Aug 28	3	Kathmandu.
Apr 11	Aug 29	4	Fly to Lhasa. Transfer to your hotel.
Apr 12	Aug 30	5	Lhasa: Visit Drepung, Sera and Norbulinka.
Apr 13	Aug 31	6	Lhasa: Visit Potala Palace, Jokhang and Barkhor Market.
Apr 14	Sep 1	7	Drive to Shigatse. (3940m) Overnight in hotel.
Apr 15	Sep 2	8	Drive to Shegar. (4350m) Overnight in hotel.
Apr 16	Sep 3	9	Drive to Mt. Cho Oyu Base Camp (4700m).
Apr 17	Sep 4	10	Rest day at base camp.
Apr 18	Sep 5	11	Trek to intermediate camp.
Apr 19	Sep 6	12	To the Advanced Base Camp (5200m).
Apr 20   May 14	Sep 7   Oct 1	13-37	<b>Climbing Period Mt. Cho Oyu.</b>
May 15	Oct 2	38	Trek back to base camp.
May 16	Oct 3	39	Drive to Nyalam. Overnight at guest house.
May 17	Oct 4	40	Drive to Kathmandu. Transfer to hotel.
May 18	Oct 5	41	Free day in Kathmandu.
May 19	Oct 6	42	Transfer to airport and departure.



Map  
PDF  
Print  
Info Form  
Bio Data Form  
Expedition Support Treks

### Departure Date & Cost

**US\$ 18395 per person**

<b>2008</b>	<b>Autumn</b>	<b>26 August</b>
<b>2009</b>	<b>Spring</b>	<b>April 8</b>
<b>2009</b>	<b>Autumn</b>	<b>26 August</b>

### Costs include:

- Flight Kathmandu - Lhasa.
- Airport - Hotel - Airport transfers.
- Guided sightseeing in Tibet as per program.
- Peak Permit Fee
- Hotel accommodation at a tourist class hotel (single room & breakfast) in Kathmandu for 5 nights and full board in Tibet
- Base camp, advance base camp and high altitude food and fuel as per climbing period
- Transportation as per program / itinerary for members, Sherpas and equipment.
- Luggage transfer from base camp to advance base camp and from advance base camp to base camp
- All common equipments for climbing such as fixed ropes, main ropes, snow bars, ice screws, pitons, high altitude tents, etc.
- VE-25 North Face tents for base camp and high camps
- Kitchen tents, toilet tents, shower tents, dining and kitchen materials
- Solar panels for light and recharging
- One climbing Sherpa per member for the expedition
- 3 oxygen bottles (4Ltr) per member with mask and regulator for expedition use
- 2 oxygen bottles for the climbing Sherpa
- Gamow bag
- Wages, equipment allowances, insurance, food and tents for Sherpas, cook, kitchen boys, Liaison Officer and interpreter
- One walkie-talkie for each member and Sherpa for expedition use
- Highway and conservation charges
- Garbage deposit

### Cost do not include:

- International flights other than Kathmandu - Lhasa.
- Meals in Kathmandu
- Drinks, laundry, postage, telephone calls and all other expenses of personal nature
- Entry visa into Nepal
- Reentry visa into Nepal. (Can be obtained at the immigration office in Kodari)
- International departure tax at Kathmandu Airport
- Personal travel, medical and rescue insurance

### Other Costs:

- Extra oxygen: US\$ 400 per bottle
- Sherpa summit bonus US\$ 500

